



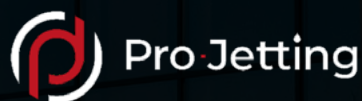
PROFESSIONAL JETTING EQUIPMENT & SOLUTIONS

PROFESSIONAL JETTING EQUIPMENT & SOLUTIONS

PRO-JETTING offers a complete range of units, robots, parts and accessories for jetting and industrial cleaning up to 2800bar (40,600psi) backed by personal service and an in-house engineering department.

Our product lines include: (Ultra) High pressure units up to 2800 bar; Steam- and Hot water high pressure units, Tank- and industrial cleaning robotics and all complementary parts and accessories to help our customers making their everyday jobs safer, easier and more efficient.

PRO-JETTING'S product lines are engineered to comply with the SIR high pressure safety guidelines and with low-emissions engines compatible with renewable fuels.



PRO-JETTING B.V.
ABC-Westland 197
2685 DB, Poeldijk
the Netherlands

+31 174 289 475 [TEL]
www.PRO-JETTING.com
info@PRO-JETTING.com

Disclaimer: This brochure may unintentionally include inaccuracies or errors. We reserve the right to modify, remove or replace the products presented and do not accept accountability for the information and material in this brochure or on the websites to which hyperlinks in this brochure refer. Delivery of our products is based on our general terms and conditions.

TABLE OF CONTENT

PRO-JETTING

P 4



ELECTRIC HIGH PRESSURE UNITS

P 8



DIESEL HIGH PRESSURE UNITS

P 18



STEAM CLEANING

P 24



PRO-JETTING	4
SIR SAFETY	5
CUSTOM IS OUR SPECIALTY	5
SERVICE & MAINTENANCE	5
PROGRAM+	6
HDE37	8
HDE56 DNV	12
ALTERNATIVE FUELS	15
HDMD54	18
STEAM CLEANING	24
PRO HOT AND STEAM UNITS	28
SEWER CLEANING	36
PRO VANPACK	38
DIETMAR KAISER	44
NMV PTO PUMP KIT	46
SPECIAL PURPOSE VEHICLES	48
ACCESSORIES	52
NOTES	54

SEWER CLEANING

P 36

PRO VANPACK

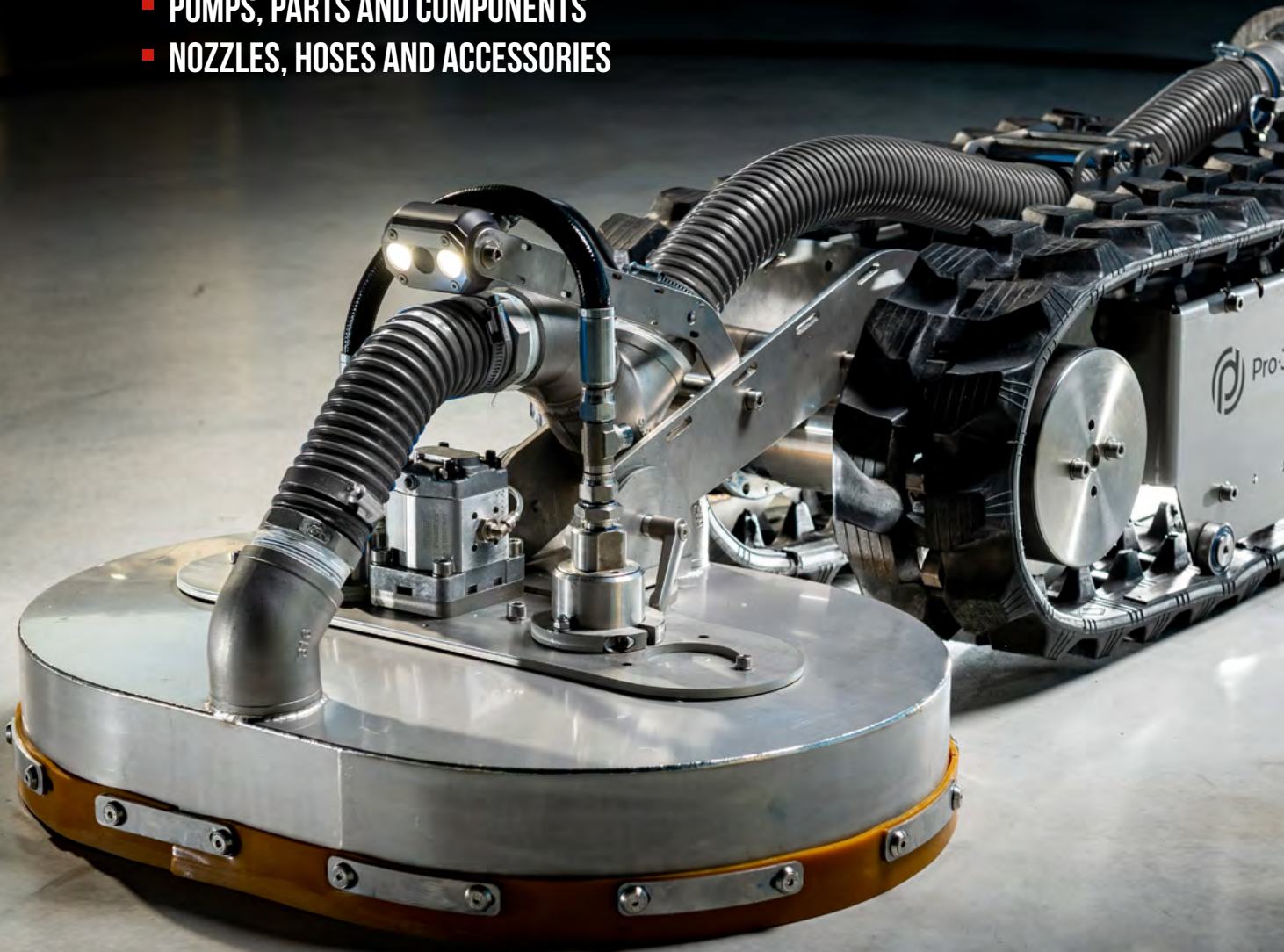
P 38



“INNOVATING THE INDUSTRY WITH HIGH PRESSURE AND ROBOTIC TECHNOLOGIES”

PRODUCT LINES

- ELECTRIC, DIESEL AND PETROL HIGH PRESSURE UNITS
- INDUSTRIAL CLEANING ROBOTICS
- SPECIAL PURPOSE VEHICLES
- HOT & STEAM HIGH PRESSURE UNITS
- SEWER CLEANING VANPACKS
- PUMPS, PARTS AND COMPONENTS
- NOZZLES, HOSES AND ACCESSORIES



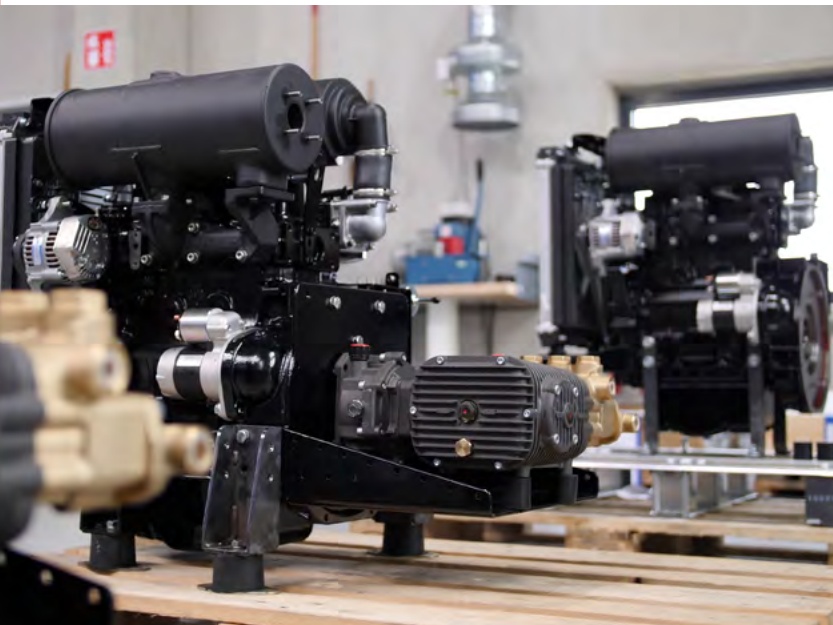
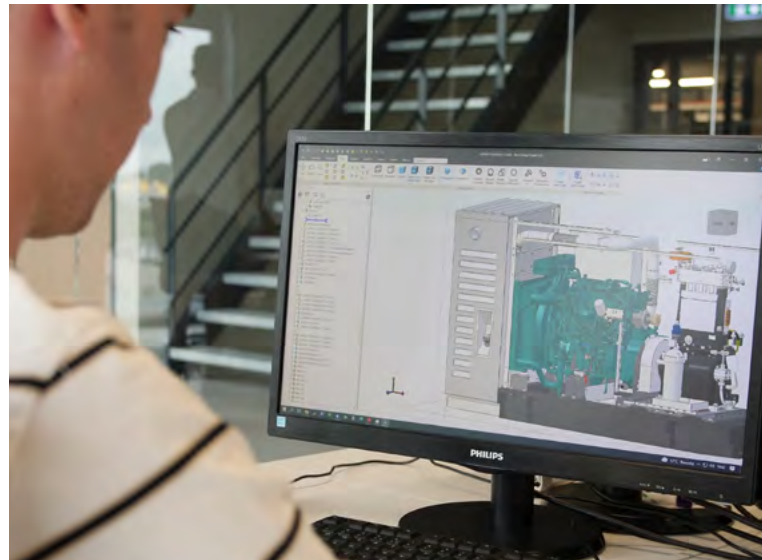


SIR SAFETY

The safety of customers is our first priority. Therefore we engineer, manufacture and service in accordance with the SIR (Association for Industrial Cleaning) with certified personnel and 4200bar (61,000 psi) test facility.

CUSTOM IS OUR SPECIALTY

We understand the importance to stand out from competition and invite you to share your ideas and custom requirements, so that our engineers can make your ideal equipment or vehicle integration reality.



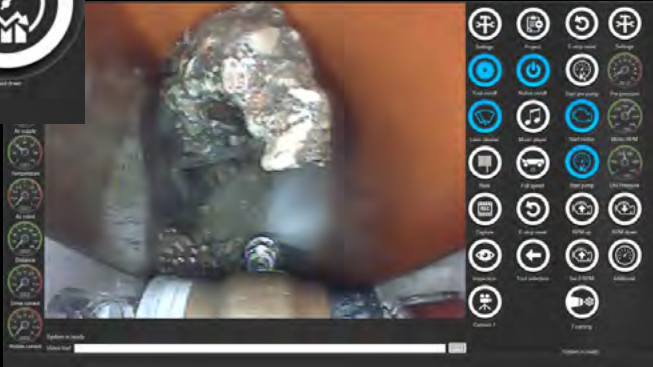
SERVICE & MAINTENANCE

Our equipment is built as tough as can be, from durable materials and components.

The beauty of our equipment is the simplicity. A clean design with no more than necessary components that are easy accessible for service.



***“INTEGRATE HIGH PRESSURE UNITS’
CONTROLS WITH PROGRAM+”***



Pump and robot controls with PROgram+

CONTROL SOFTWARE

PROGRAM+

PROgram+ is a customizable software interface for automization and robotic applications.

The PROgram+ software is windows based and integrates the controls and sensor readings from the unit with your tablet or PC.

The software can run on a tablet or in a slim window next to other programs, making it an ideal solution for operating the pump from the same control unit that is used for cleaning robots or other automization programs.

The software communicates over Profinet what means that the computer can be connected via ethernet, WIFI or over internet.

CONTROL FUNCTIONS

- Engine START / STOP
- Bypass valve OPEN / CLOSE
- Engine RPM UP / DOWN
- Custom RPM SET / RESET
- Engine REGENERATION
- Compressed Air PRESSURE ADJUSTMENT

SAFETY

- Emergency stop
- Emergency reset
- Protection and warning messages for overheating, low oil level, low water level, low water supply pressure, etc.

SENSOR READINGS

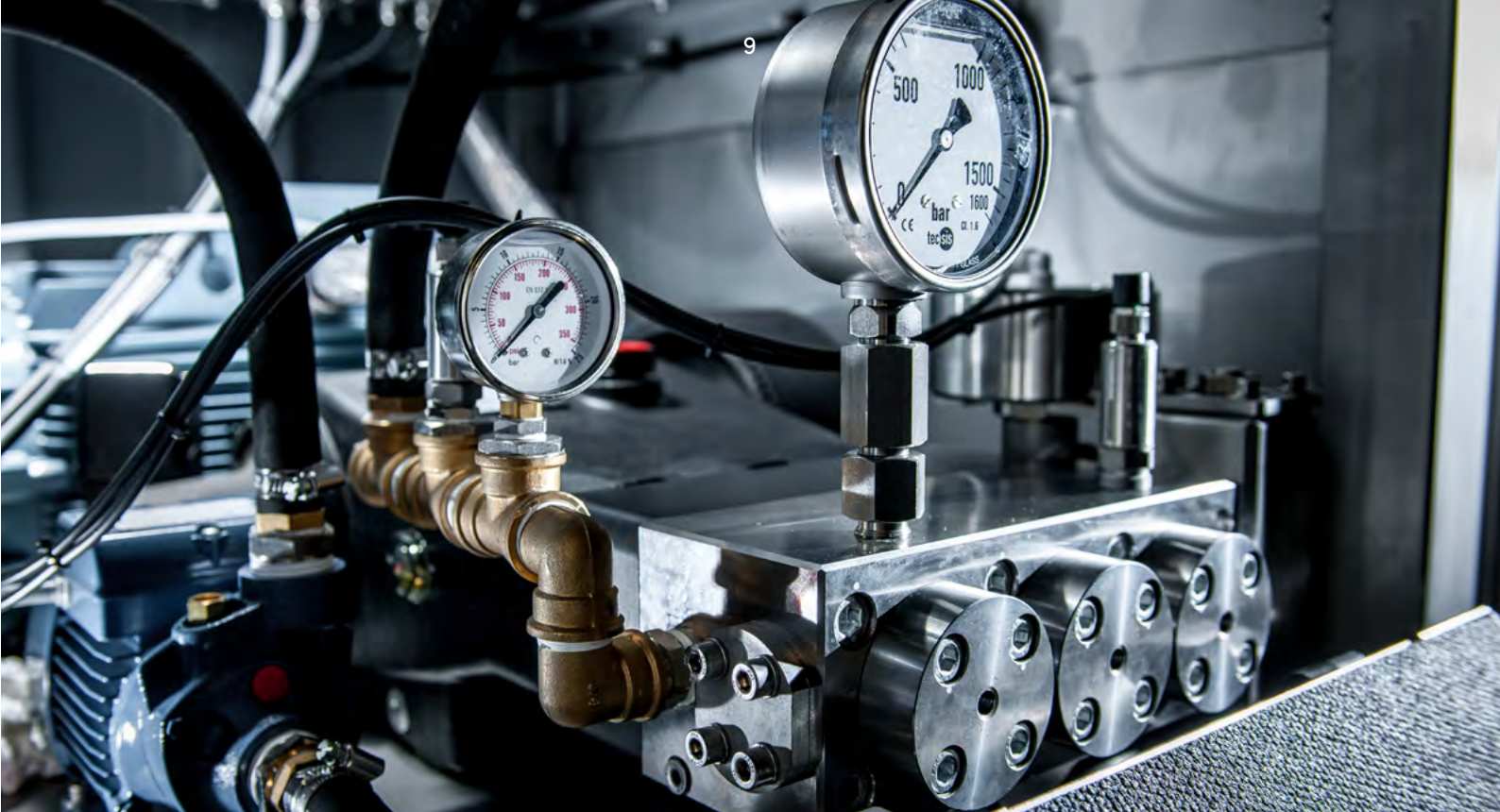
- Pump water supply pressure
- Pump high pressure
- Pump oil pressure
- Pump oil temperature
- Engine fuel level
- Engine temperature
- Engine oil pressure,
- Engine AdBlue level
- Water tank level

SERVICE

- Remote dial-in service
- Hourcounters
- System reset
- Software updates and customization



HIGH EFFICIENCY SYNRM MOTOR





HIGH PRESSURE UNIT

ELECTRIC

-  **130 - 1000 BAR** (1,885 - 14,500 PSI)
-  **19 - 150 LPM** (5 - 40 GPM)
-  **37 KW** (50 HP)

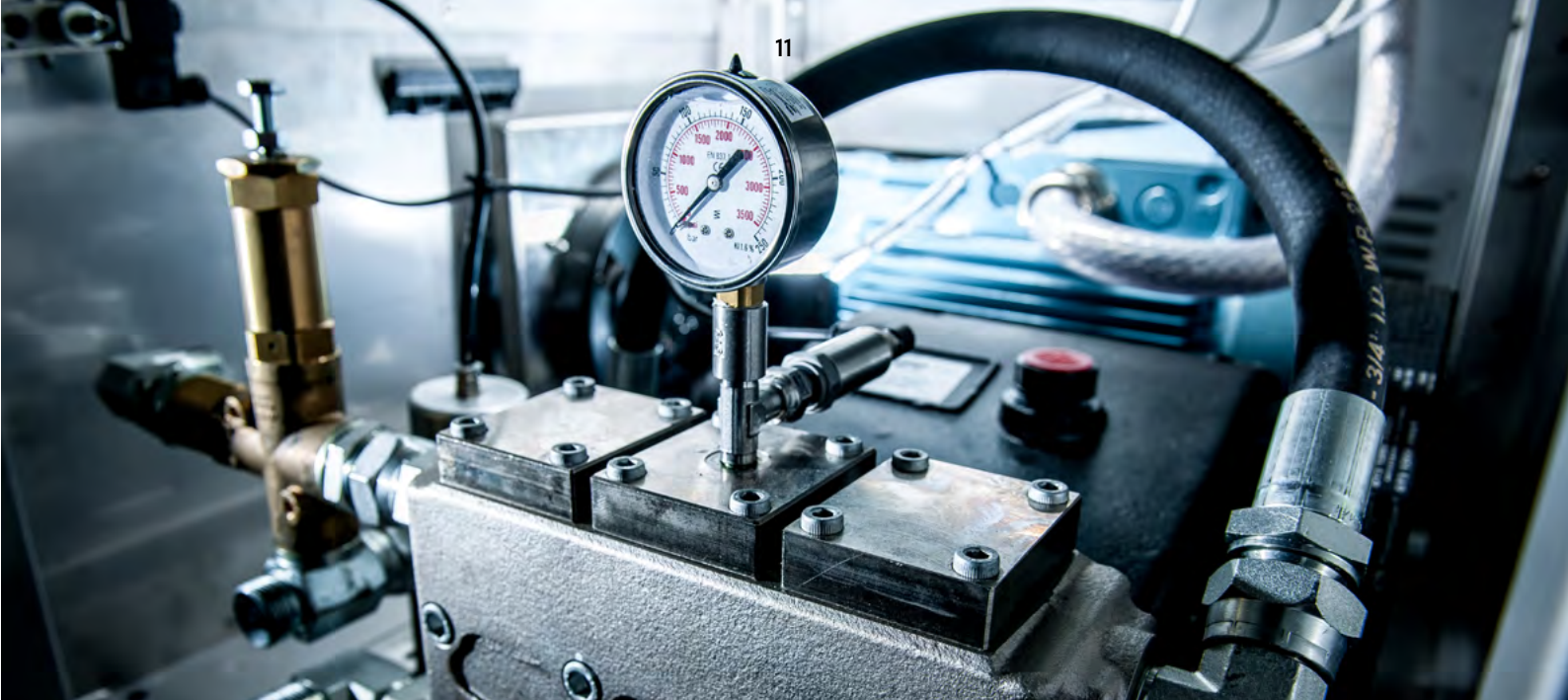
The electric HDE37 high pressure unit is built inside an enclosed, durable and compact stainless steel frame with a lightweight and efficient ABB SynRM electric motor that delivers three times the power of a conventional electric motor of the same size.

Perfect for permanent installations inside (food) production plants or special purpose vehicles.

This high pressure unit with its frequency inverter, digital controls and ethernet connection is suitable for a large variety of software-controlled applications and integrates smoothly in automated cleaning- or production lines with pre-installed pressure/ and flow programs.

***“FOR AUTOMIZED PRODUCTION PLANTS OR
SPECIAL PURPOSE VEHICLES”***





HDE37 HIGH PRESSURE UNITS

ITEM CODE	PUMP TYPE	PRESSURE		FLOW		POWER	
		BAR	PSI	LPM	GPM	KW	HP
HDE37-1000-19S	HPP EV	1000	14500	19	5	37	50
HDE37-600-30S	HPP ELH	600	8700	30	8	37	50
HDE37-500-38S	HPP ELH	500	7250	38	10	37	50
HDE37-400-47S	HPP ELH	400	5800	47	12	37	50
HDE37-310-59S	HPP ELH	310	4496	59	15.6	37	50
HDE37-280-70S	HPP ELH	280	4060	70	18	37	50
HDE37-210-85	HPP ELS	210	3050	85	22	37	50
HDE37-160-122S	HPP ELS	160	2321	160	42	37	50
HDE37-130-150S	HPP ELS	130	1885	150	40	37	50

SPECIFICATIONS

Frequency inverter	: ABB
Power supply	: 3-phase 400VAC / 50HZ : (optional 440VAC / 60 Hz)
Connection	: 63A 3-phase + 0
Motor	: ABB 132 SMF 4,HO SynRM technology
Weight	: 280 kg (620lbs)
Dimensions	: 760x882x904mm (30x35x36")
Protection	: IP54

FEATURES

- Compact and durable stainless steel frame
- Frequency inverter for continuous pressure adjustment
- Digital controls and ethernet connection for automatic and robot integrations via PROgram +
- Easily cleanable water filter
- Electronic over and under pressure monitoring
- Electronic water supply pressure monitoring
- Frequency controlled supply pump
- SIR certified
- Ce certified
- Remote control (optional)



DNV HIGH PRESSURE UNIT

ELECTRIC

-  **130 - 1500 BAR** (1,885 - 21,750 PSI)
-  **19 - 220 LPM** (5 - 58 GPM)
-  **56 KW** (76 HP)

This high pressure unit is conveniently installed in a durable DNV container with stainless steel pump head and frequency inverter for offshore and industrial cleaning applications.

Available with electric drive up to 56 kW, with a maximum pressure of 1500 bar or a maximum flow of 220 LPM.

The stackable, heavy-duty, DNV certified container has lifting eyes and forklift pockets for easy transportation.

HDE37 DNV HIGH PRESSURE UNITS

ITEM CODE	PUMP TYPE	PRESSURE		FLOW		POWER	
		BAR	PSI	LPM	GPM	KW	HP
HDE56-1500-19-PRO	HPP ESV	1500	21750	19	5	56	76
HDE55-1000-26-PRO	HPP ESV	1000	14500	26	7	55	75
HDE55-600-38-PRO	HPP ESH	600	8700	38	10	55	75
HDE55-500-55-PRO	HPP ESH	500	7250	55	15	55	75
HDE55-400-68-PRO	HPP ESH	400	5800	68	18	55	75
HDE55-310-82-PRO	HPP ESH	310	4495	82	22	55	75
HDE55-250-106-PRO	HPP ES	250	3625	106	28	55	75
HDE55-210-133-PRO	HPP ES	210	3045	133	35	55	75
HDE55-185-153-PRO	HPP ES	190	2683	153	40	55	75
HDE55-153-185-PRO	HPP ES	155	2219	185	49	55	75
HDE56-130-220-PRO	HPP ES	130	1885	220	58	56	76

NON-ELECTRIC ALTERNATIVES

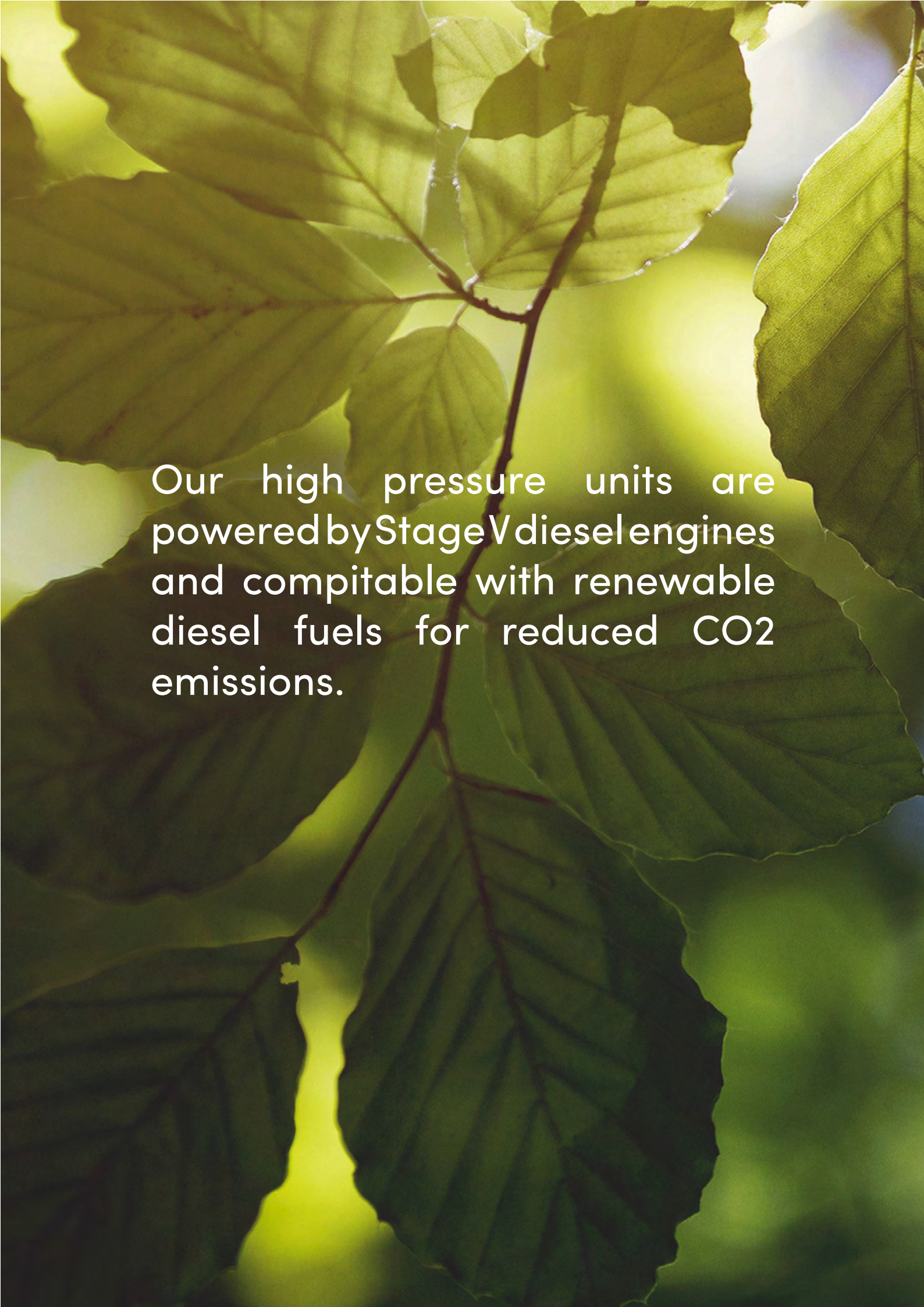
No 3-phase power supply at site?
No problem! Inform about the Diesel
and Petrol engine driven options.

SPECIFICATIONS

Frequency inverter	: PRO-JETTING
Power supply	: 3-phase 400VAC / 50HZ : (optional 440VAC / 60 Hz)
Connection	: 63A 3-phase + N
Motor	: ABB 250 SMA
Weight	: 1600 kg (3527lbs)
Drive	: Electric 3 phases
Dimensions	: 1230x2200x1140mm (52x87x45")
Certifications	: Designed, built and certified to DNV 2.7-1 / BS EN12079 : Atex ZONE 2 (OPTIONAL) : CE : SIR

FEATURES

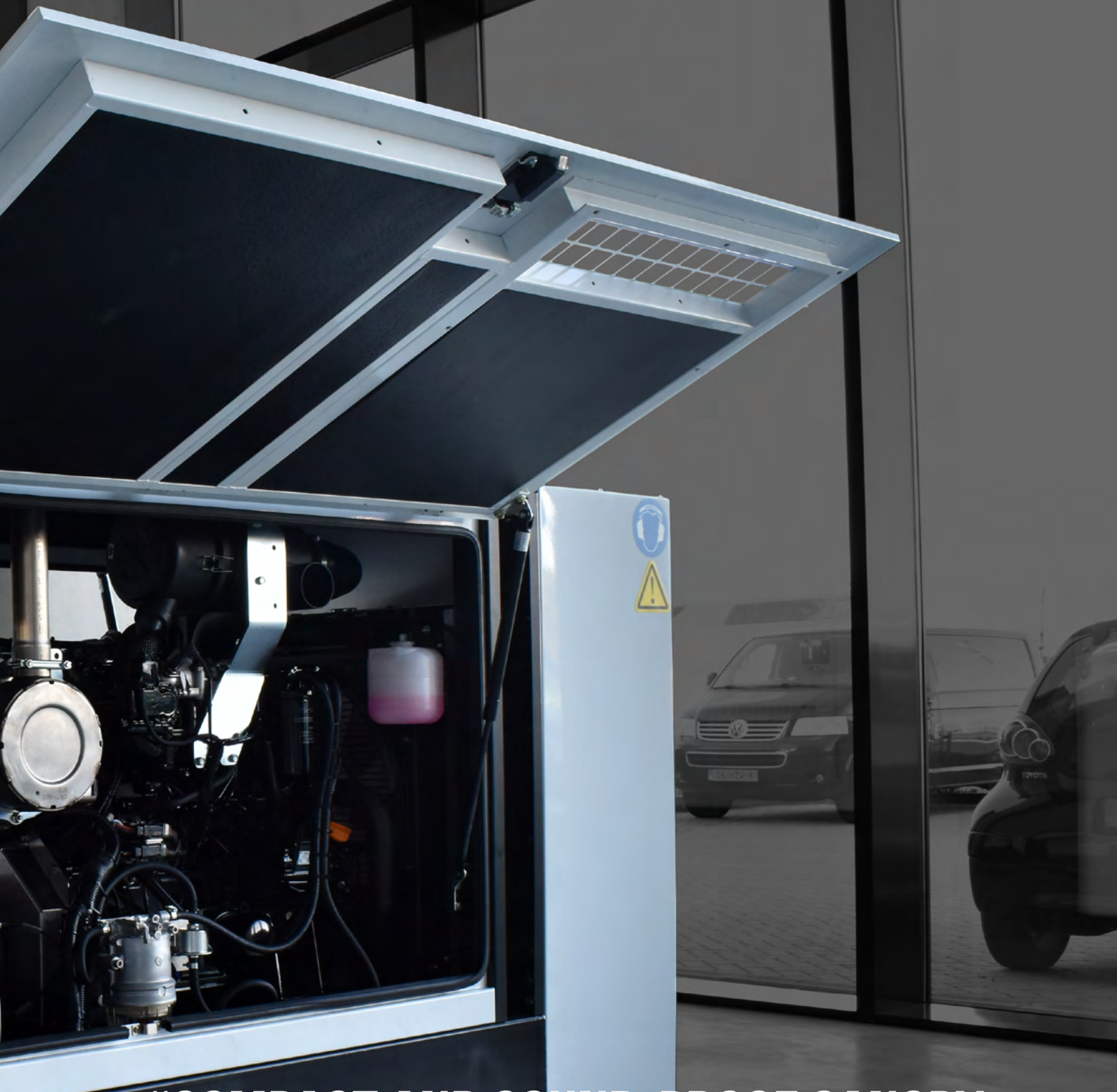
- Heavy-duty DNV container with front access doors and top storage lid
- Stainless steel pump head for salt water applications
- Frequency inverter for continuous pressure adjustment
- Digital controls and ethernet connection for automatic and robot integrations via PROgram +
- Easily cleanable water filter
- Electronic over and under pressure monitoring
- Electronic water supply pressure monitoring
- Frequency controlled water supply pump
- Remote control (optional)



Our high pressure units are powered by Stage V diesel engines and compatible with renewable diesel fuels for reduced CO₂ emissions.









***“COMPACT AND SOUND-PROOF CANOPY
WITH A STAGE V DIESEL UP TO 55KW”***




HDMD54 HIGH PRESSURE UNIT

DIESEL

 **130 - 1500 BAR** (1,885 - 21,750 PSI)

 **19 - 220 LPM** (5 - 58 GPM)

 **54 KW** (72 HP)

This diesel engine driven high pressure unit is available up to 54kW and conveniently built inside a compact and soundproof canopy.

Driven by a fuel efficient Yanmar stage V diesel engine and available with a variety of reliable HPP pump high pressure units for a pressure up to 1500bar (21,750psi) or a flow up to 220 LPM (58GPM).

The high pressure unit has intuitive digital controls that can be used with our PROgram+ software for a smooth integration of the pump controls with your robotic- or automated application.

The soundproof canopy can be used stationary, configured as a trailer or fitted crosswise inside a container or box truck.

LOW EMISSIONS, RELIABLE AND FUEL EFFICIENT

The Yanmar TNV common rail STAGE V Diesel engines are extremely reliable and supported with a worldwide service network and 5 years factory warranty.

- Compliant with STAGE V and Tier 4 final
- Low fuel consumption
- Low noise and vibration
- Outstanding cold startability
- Compatibility with HVO, BTL, GTL, CTL fuels

ELECTRONIC PUMP CONTROLS AND PROGRAM+

With emergency stop, optional (wireless) remote control, or software integrations for automatic applications and controlling the high pressure unit safe and convenient from a (robot) control unit with all important operating data at a glance.



HIGH PRESSURE PUMPS

The HDMD54 is available in a variety of pressure and flow combinations with HPP ES, ESH and ESV pumps with stainless steel pump heads.



HPP EFV

PRO'S

DIRECT DRIVEN

STAINLESS STEEL PUMP HEAD

CERAMIC PLUNGERS

WIRELESS REMOTE CONTROL

Optional wireless receiver with remote control to start/ stop, adjust the RPM (pressure) and open/ close the by-pass.



USER FRIENDLY CONTROLS

Intuitive, electronic, controls with dry-run- and temperature protection.



CONVENIENT CONNECTIONS

For ease of operation and minimized startup times.

CARTRIDGE FILTER

Large capacity and washable cartridge filter in a self bleeding, housing.

SOUND-PROOF CANOPY

Durable and compact sound insulating canopy with hinged access doors on 3 sides.



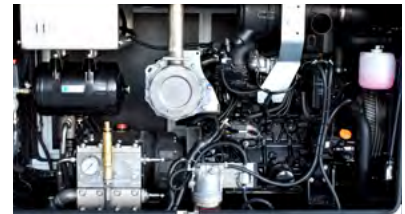
FUEL TANK

75 L Fuel tank with a low center of gravity conveniently built in the canopy frame.

LOW EMISSIONS

Yanmar Stage V with Diesel Exhaust Fluid after treatment system to reduce harmful emissions.

Compatible with alternative fuels HVO, BTL, GTL, CTL



YANMAR TURBO DIESEL

Reliable and fuel-efficient, liquid cooled, Yanmar Stage V turbo diesel engine with digital CAN control.

PUMP

Easy accessible for service and available in a large variety of PRO-JETTING and HPP pumps mostly with stainless steel pump heads for saltwater usage.



CONFIGURATIONS

The HDMD54 Diesel high pressure unit is built inside a sound-proof canopy that can be configured as a trailer with a bottom water tank.

TYPE	DIMENSIONS MM	WEIGHT KG	WATER TANK L	FUEL TANK L
Canopy	1810 x 860 x 1150	975	-	75
Canopy with vent cover	2400 x 860 x 1300	1125	-	75
Trailer	4000 x 1580 x 1650	Max. 1500	520	75
Trailer with water tank	4000 x 1580 x 1950	Max. 1500	520	75

YANMAR STAGE V DIESEL

- Brand : Yanmar
- Power : 53.7kW
- Motor : 4TNV98CT
- Type : Turbo, 4-cyl. liquid cooled
- Emission : Stage V, Tier 4 final
- Fuels : Diesel, HVO, BTL, GTL, CTL



HDMD54 DIESEL HIGH PRESSURE UNITS

ITEM CODE	PUMP TYPE	PRESSURE		FLOW		POWER	
		BAR	PSI	LPM	GPM	KW	HP
HDMD54-1500-19-PRO	HPP ESV	1500	21750	19	5	54	72
HDMD54-1000-26-PRO	HPP ESV	1000	14500	26	7	54	72
HDMD54-600-38-PRO	HPP ESH	600	8700	38	10	54	72
HDMD54-500-55-PRO	HPP ESH	500	7250	55	15	54	72
HDMD54-400-68-PRO	HPP ESH	400	5800	68	18	54	72
HDMD54-310-82-PRO	HPP ESH	310	4495	82	22	54	72
HDMD54-250-106-PRO	HPP ES	250	3625	106	28	54	72
HDMD54-210-133-PRO	HPP ES	210	3045	133	35	54	72
HDMD54-185-153-PRO	HPP ES	190	2683	153	40	54	72
HDMD54-153-185-PRO	HPP ES	155	2219	185	49	54	72
HDMD54-130-220-PRO	HPP ES	130	1885	220	58	54	72

FEATURES

- Compact sound-proof canopy with top-hinging access doors at both sides
- Adjustable RPM for continuous pressure adjustment
- Digital controls and ethernet connection for automatic and robot integrations via PROgram+
- Easily cleanable water filter
- Electronic over- and under pressure monitoring
- Electronic water supply pressure monitoring
- Emergency stop
- SIR certified
- Ce certified
- Remote control (optional)

SUPERB CLEANING WITHOUT SURFACE DAMAGE

WHY STEAM?

- ECO FRIENDLY
- NO SURFACE DAMAGE
- NO CHEMICALS
- NO WAITING TIME
- LOW WATER CONSUMPTION



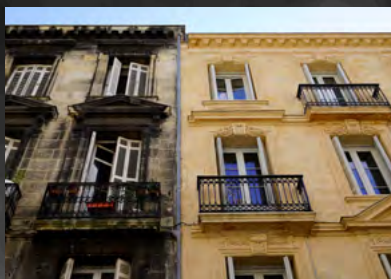


Pro-Steam



SUPERB CLEANING, NO DAMAGE!

Pro-steam combines high pressure at a very high temperature (150°C) for rapid and eco friendly cleaning without damaging delicate surfaces.



Safe for (monumental) statues, facades, buildings and rooftops.



Safe for wooden terraces, fencing, furniture and other surfaces. Leaving the wood as new, without damaging its fibres.



Safe for weed removal and cleaning terraces and (ceramic) tiles, leaving the sand or grout inside the joints.



Removes oil, grease and other contaminants by thinning and dissolving them with heat.



Removes Graffiti, paint, road marking, coating, resin and glue without chemical strippers and without waiting times.



Removes chewing gum in a matter of seconds and faster than all other cleaning methods.



Removes atmospheric contaminants and smog.



Removes weed, algae and moss, and kills their spores.



Cleans and disinfects waste bins, containers, bus shelters and other urban structures by killing most germs and bacteria and removing odors.



HOT AND STEAM UNITS



PRO HOT

Hot water increases cleaning speeds as it liquifies greases and dissolves much more material than cold water. PRO-HOT high pressure units deliver high pressure water at 95°C to increase working speeds.

PRO STEAM

PRO-STEAM regulates the unit to deliver steam at 150 °C at an adjustable pressure up to 250 bar for removing graffiti and adhesives, chewing gum, atmospheric pollution, oils, weeds, algae and moss, and many other substances very fast, without chemicals and without damaging surfaces. All PRO-STEAM units can also be used at 95 C at the maximum pressure and flow for increased working speeds when steam is not required.

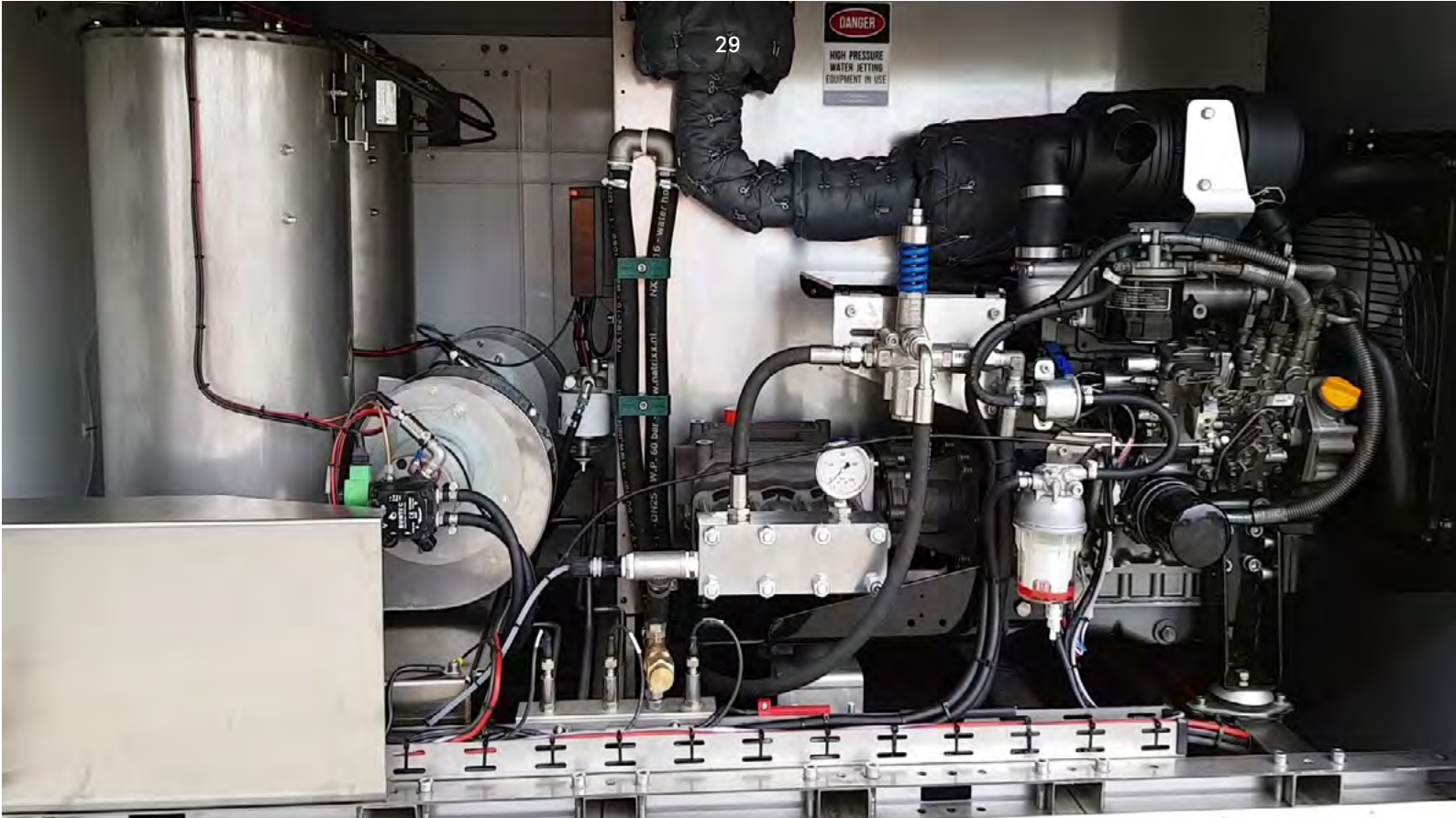
ELECTRONIC CONTROLS



Intuitive, electronic control module for temperature settings, dry-run and temperature protection, burner diagnosis and for digital sensor readings such as temperature, pressure and water tank level.

-  **300 - 800 BAR** (4,350 - 11,600 PSI)
-  **95 - 150 °C** (200 - 300 °F)
-  **9 - 54 KW** (12 - 72 HP)





SERVICE DETAIL

All our hot water and steam high pressure units are designed in accordance to our engineering philosophy with reliable, and no more than necessary components that are easy accessible for service and maintenance.

HIGH PRESSURE PUMPS

The PRO HOT and -STEAM units are available with a large variety of pressure and flow combinations with PRO-JETTING and HPP pumps.



HPP CH

PRO'S

DIRECT DRIVEN

STAINLESS STEEL PUMP HEAD

CERAMIC PLUNGERS

USER FRIENDLY CONTROLS

Intuitive, electronic, controls with digital display and dry-run- and temperature protection.

SOUND-PROOF CANOPY

Durable and compact sound insulating canopy with hinged access doors on both sides

DESCALING SYSTEM

Descaling fluid dosing system for extended lifetimes.

STAINLESS REELS

Stainless steel hose reels with 30 meters $\frac{3}{4}$ " filling hose and 50m $\frac{3}{8}$ " 150°C high pressure hose.

TRAILER

Compact trailer made of galvanized aluminum with leveler and rear stabilizer support jack.



BURNER

Electronic controlled hot water burner compliant with PED regulation.

LOW EMISSIONS

Yanmar Stage V with Diesel Exhaust Fluid after treatment system to reduce harmful emissions.

FUEL TANK

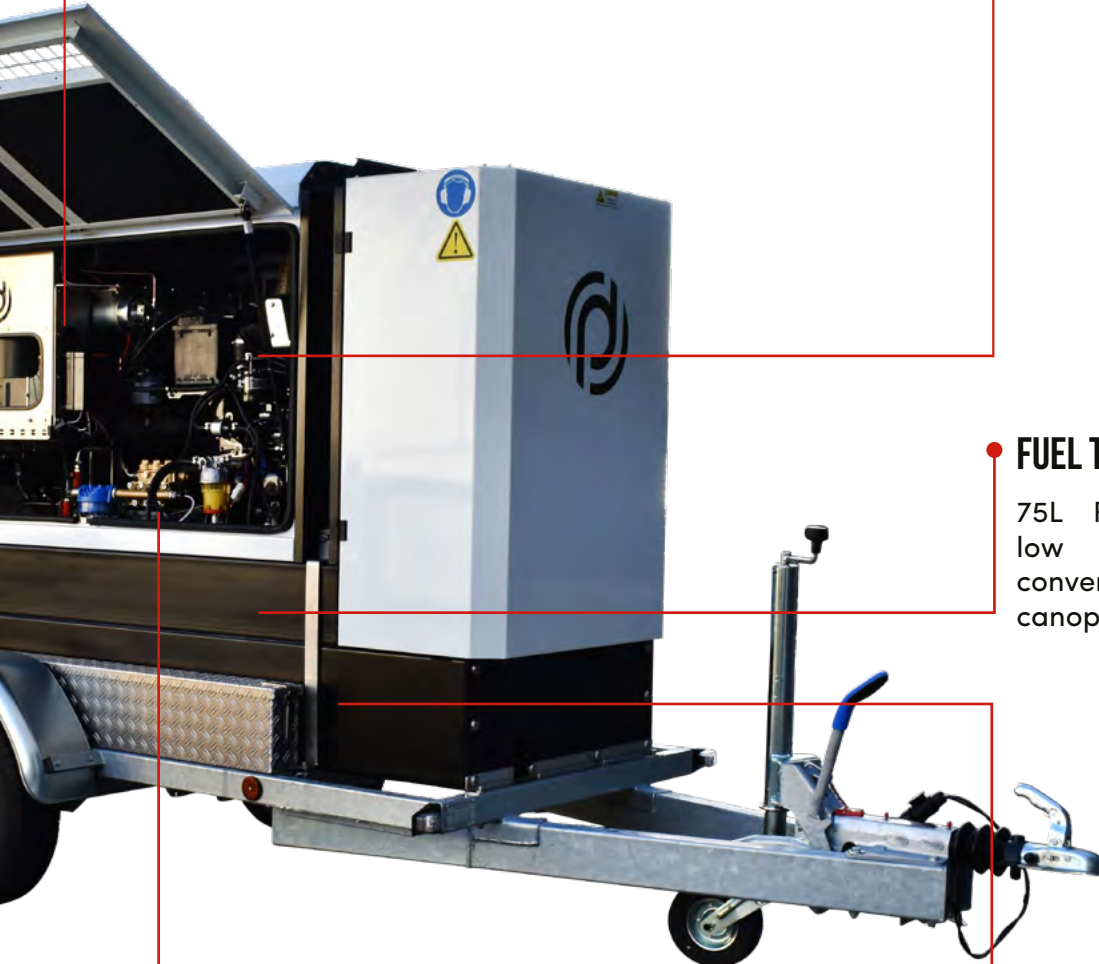
75L Fuel tank with a low center of gravity conveniently built in the canopy frame.

PUMP

Easy accessible for service and available in a large variety of PRO-JETTING and HPP pumps.

WATER SUPPLY

Large capacity water tank with a low center of gravity.



DESCALING SYSTEM

Descaling fluid dosing system for extended lifetimes.

LOW EMISSIONS

Stage V, liquid cooled, Yanmar diesel engine.

Compatible with renewable HVO, BTL, GTL and CTL diesel fuels for reduced emissions.



STORAGE

Lockable storage cabinet for equipment and accessories.

WATER SUPPLY

900+ L water flat bottom tank with slingshots and a low center of gravity.

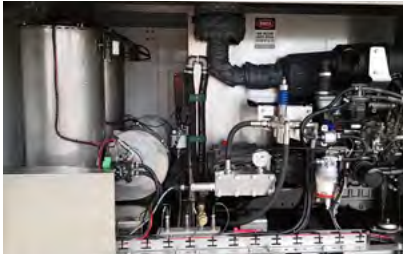
TANDEM TRAILER

Tandem axle, braked, trailer made of galvanized steel with leveler and rear stabilizer support jack.



STAINLESS REELS

Stainless steel hose reels with 30 meters $\frac{3}{4}$ " filling hose and 50m $\frac{3}{8}$ " 150°C high pressure hose.



USER FRIENDLY CONTROLS

Intuitive, electronic, controls with digital display and dry-run and temperature protection.



EMERGENCY STOP

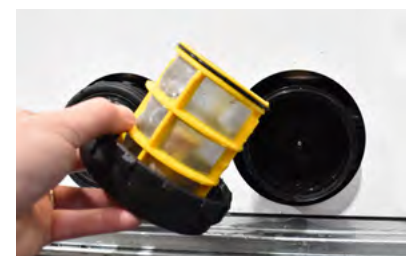
Double-Wired emergency stop according SIR regulations.

FUEL TANK

120+ L Diesel tank HDPE welded in the center of the water tank with a low center of gravity.

CARTRIDGE FILTER

Washable cartridge filters in a self-bleeding housing.



**CANOPY TRAILER A****CANOPY B**

CANOPY A	DIMENSIONS MM	WEIGHT KG	WATER TANK L	FUEL TANK L
Without duct	1460 x 730 x 1070	675	-	60
With tank	1910 x 730 x 1371	750	350	60
Trailer	3740 x 1480 x 1880	Max. 1300	350	60

CANOPY B	DIMENSIONS MM	WEIGHT KG	WATER TANK L	FUEL TANK L
Without duct	1810 x 860 x 1150	975	-	75
With tank	2400 x 860 x 1300	1125	520	75
Trailer	4000 x 1580 x 1950	Max. 1500	520	75

**TANDEM TRAILER****SKID**

TYPE	DIMENSIONS MM	WEIGHT KG	WATER TANK L	FUEL TANK L
Skid	2480 x 1220 x 1230	850*	950	126
Tandem trailer	3530 x 1780 x 2000	Max 1700	950	126

* HDMD15-300-26 PRO HOT with empty tank

YANMAR STAGE V DIESEL

The PRO HOT AND -STEAM UNITS are driven by reliable and fuel-efficient Yanmar TNV common rail STAGE V Diesel engines.



- Motor : 3TNM68-AS 3TNV82-AS 4TNV98 4TNV98CT
- Power : 14,7kW 23,0*KW 51,7kW 53.7kW
- Cylinders : 3 3 3 4
- Type : Turbo
- Cooling : Liquid cooled
- Emission : Stage V, Tier 4 final
- Fuels : Diesel, HVO, BTL, GTL, CTL

* derated to 18.9 kW to comply with Euro Stage V

AVAILABLE HOT AND STEAM UNITS

ITEM CODE	ENGINE	PUMP	BAR	LPM	°C	CONFIGURATIONS
12-300-20	3TNM68-AS	TW7050S	300	20	150	Canopy A
12-300-20	3TNM68-AS	TW7050S	300	20	150	Canopy A
11-350-16	3TNM68-AS	TW7050S	350	16	150	Canopy A
11-500-12	3TNM68-AS	TW4073S	500	11,5	150	Canopy A
14-350-20	3TNV82-AS	TW7050S	350	20	150	Canopy B, Skid, Tandem Trailer
12-350-18	3TNV82-AS	TW7050S	350	18	150	Canopy B, Skid, Tandem Trailer
17-500-18	3TNV82-AS	TW5573S	500	18	150	Canopy B, Skid, Tandem Trailer
15-300-26	3TNV82-AS	CH300/31*	300	26	95	Canopy B, Skid, Tandem Trailer
17-450-20	3TNV82-AS	CH500/25*	450	20	95	Canopy B, Skid, Tandem Trailer
9-250-18D	3TNV82-AS	2 x TW5550S	250	18	150	Canopy B, Skid, Tandem Trailer
35-600-30	4TNV98C	ELH30/600*	600	30	95	Skid, Tandem Trailer
37-500-38	4TNV98C	ELH38/500*	500	38	95	Skid, Tandem Trailer
49-500-50D	4TNV98CT	2xCH500/25*	500	50	95	Skid, Tandem Trailer
53-500-55	4TNV98CT	ESH55/500*	500	55	95	Skid, Tandem Trailer
44-600-38	4TNV98CT	ESH38/600*	600	38	95	Skid, Tandem Trailer
40-800-26	4TNV98CT	EFV26/800*	800	26	95	Skid, Tandem Trailer

* Stainless steel pump head

SEWER CLEANING








PRO VANPACK

DIESEL - PETROL - PTO

 **162 - 406 BAR** (2,349 - 2,900 PSI)

 **46 - 106 LPM** (12 - 28 GPM)

 **18 - 54 KW** (24 - 72 HP)

The PRO sewer cleaning vanpacks combine power and functionality for professionals who rely on great equipment to make their work easier.

These vanpacks have 2 hydraulic driven reels with freewheeling ability. The main cleaning reel holds up to 120m ½" hose and can be both 90° pivoted and 180° rotated for positioning above the manhole and clear from the vehicle.

The secondary reel is connected via a threeway valve and can be used for both high- and low pressure applications. Such as cleaning with a gun, filling the tank or for working with a different size hose as the primary reel.

The high-pressure pump is driven via hydraulics by the vehicle's PTO, Stage V diesel or petrol engine and electronically controlled for continuous adjustment of the engine's RPM to deliver the right flow and reducing fuel consumption and CO emissions.

- 2 Hydraulic driven reels with freewheel
- Direct hydraulic driven pump
- Convenient digital controls
- Low CO emissions and fuel consumption
- Light weight stainless steel frame
- Large capacity water filters
- HDPE water tank
- Aluminum hydraulic oil tank



USER FRIENDLY CONTROLS

Intuitive, electronic, controls with digital display for safety warnings and diagnose.

PRIMARY HOSE REEL

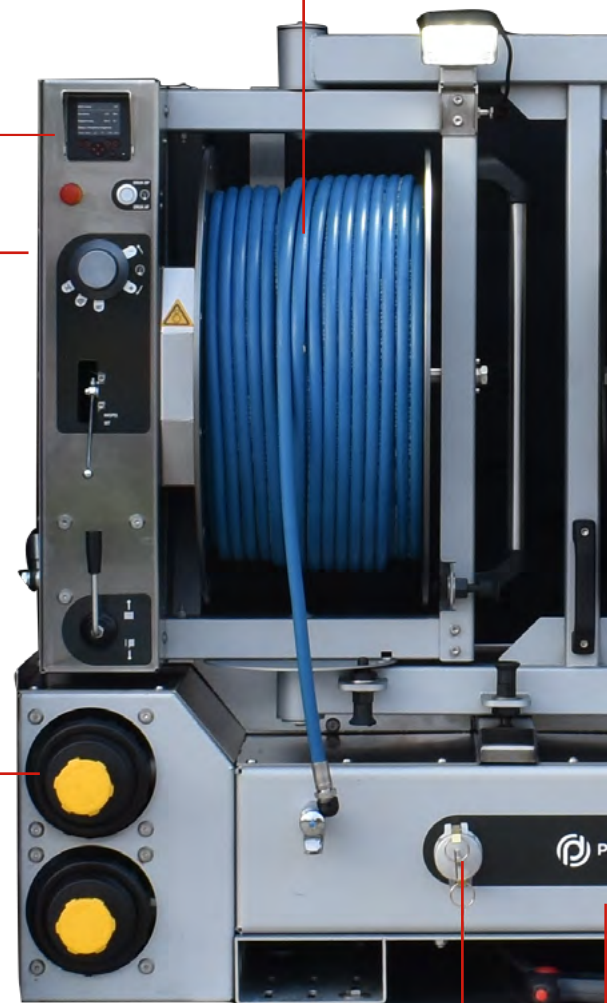
90 degrees pivoting and 180 degrees rotating Hydraulic driven cleaning hose reel with continuous speed adjustment for 120m ½" hose.

FUEL TANK

120 L HDPE welded Diesel tank with level sensor.

CARTRIDGE FILTER

Washable cartridge filters in a self bleeding housing for the pump and filling the tank.



INJECTOR

Integrated injector for filling the tank quickly with surface water.

WATER TANK

800 L HDPE welded water tank with slingshots, mechanical inlet float, level sensor and manhole.



WIRELESS REMOTE

Wireless remote control to open/ close the high pressure valve and adjust the pressure from distance.

SECONDARY HOSE REEL

Hydraulic driven high pressure/ filling hose reel with continuous speed adjustment for 100m ½" hose or 50m ¾" hose.

This secondary reel has a threeway valve for filling the tank or high pressure usage.

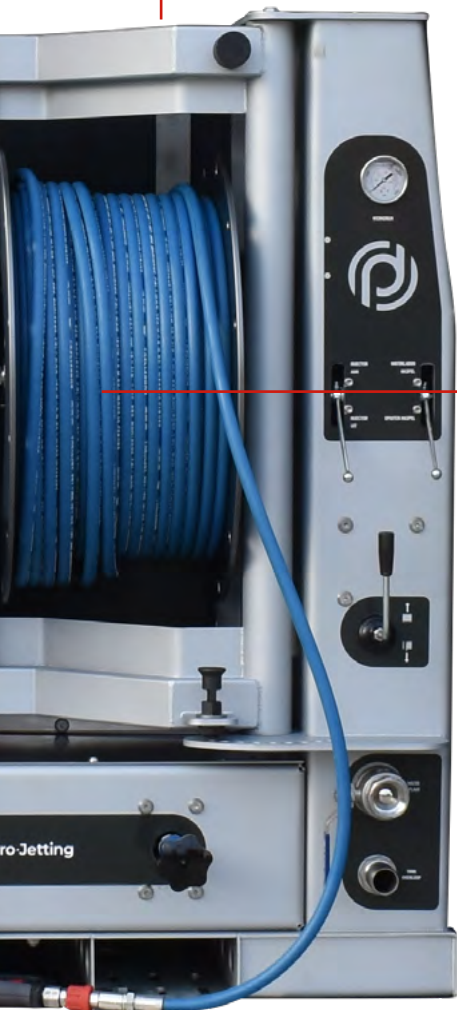
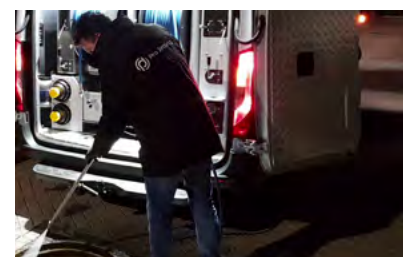
LOW EMISSIONS

Stage V, liquid cooled, Yanmar diesel engine.

Compatible with renewable HVO, BTL, GTL and CTL diesel fuels for reduced emissions.

ACCESSIBLE COUPLINGS

Quick connect couplings for filling and training the water tank.



DIGITAL CONTROLS

The user-friendly controls are conveniently placed next to the primary reel with a rotary controller to adjust the flow and a digital display for the following functions and sensor readings:

- SIL 3 emergency stop
- Start engine
- Water level
- Fuel level
- Temperature
- RPM
- Hour counter
- Working pressure
- Oil pressure
- Engine data and diagnose



DIESEL AND PETROL ENGINES

The PRO Vanpacks can be driven by reliable and fuel-efficient Yanmar TNV common rail STAGE V Diesel or Vanguard petrol engines.

MAKE	MODEL	TYPE	EMISSIONS	FUELS	POWER
Yanmar	3TNV82	3 Cyl. Liquid cooled	Stage V	Diesel, HVO, BTL, CTL, GTL	23*
Yanmar	4TNV88C	4 Cyl. Liquid cooled	Stage V	Diesel, HVO, BTL, CTL, GTL	36
Yanmar	4TNV98C	4 Cyl. Liquid cooled	Stage V	Diesel, HVO, BTL, CTL, GTL	42
Yanmar	4TNV98CT	4 Cyl. Turbo Liquid cooled	Stage V	Diesel, HVO, BTL, CTL, GTL	54
Vanguard	61G2	2 Cyl. V-twin air cooled		Petrol	30

* derated to 18.9 kW to comply with Euro Stage V

HIGH PRESSURE PUMP

The HPP CL, ET, EFR and ESR high flow pumps combines high quality with a lightweight design to be used at a wide RPM range for maximized flow and pressure output.



HPP ET

AVAILABLE PRO VANPACKS

ITEM CODE	PUMP TYPE	PRESSURE		FLOW		POWER	
		BAR	PSI	LPM	GPM	KW	HP
R18-165-56-PRO	HPP CL*	165	2392	56	14,8	18	24
R18-203-46-PRO	HPP ET	203	2943	46	12,1	18	24
R18-162-57-PRO	HPP ET	162	2349	57	15,1	18	24
R35-200-70-PRO	HPP ET	259	2900	70	18,4	35	47
R35-203-89-PRO	HPP EFR	203	2943	89	23,5	35	47
R40-200-70-PRO	HPP ET	296	2900	70	18,4	40	54
R40-175-87-PRO	HPP ET	236	2537	87	23,1	40	54
R55-250-106-PRO	HPP ESR*	267	3625	106	28,1	54	72
R55-200-70-PRO	HPP ESR*	406	2900	70	18,4	54	72
R30-175-60-PRO**	HPP ET	259	2537	60	15,7	30	40

*Stainless steel pump head **Petrol engine driven

SPECIFICATIONS

Primary high pressure hose reel

Drive : Hydraulic driven with continuous speed adjustment
 Movement : 90 degrees pivoting + 180 degrees rotating
 Capacity : 120m ½" hose

Secondary high pressure hose reel

Drive : Hydraulic driven with continuous speed adjustment
 Capacity : 100m ½" hose or 50m ¾" hose

Water tank capacity : 400, 800, 1000L

Fuel tank capacity : 120L

Weight : 700 kg (R18)

: 1300 kg (R35)

WORLD CLASS CLEANING TRUCKS

Driven by innovation and technical perfection Dietmar Kaiser manufactures best in class jetting, vacuum, combination and recycler trucks and their components such as intensifier and vacuum pumps, for professional sewer- and industrial cleaning.

pro-jetting is a proud partner of dietmar kaiser, bringing local sales and service to the benelux market.

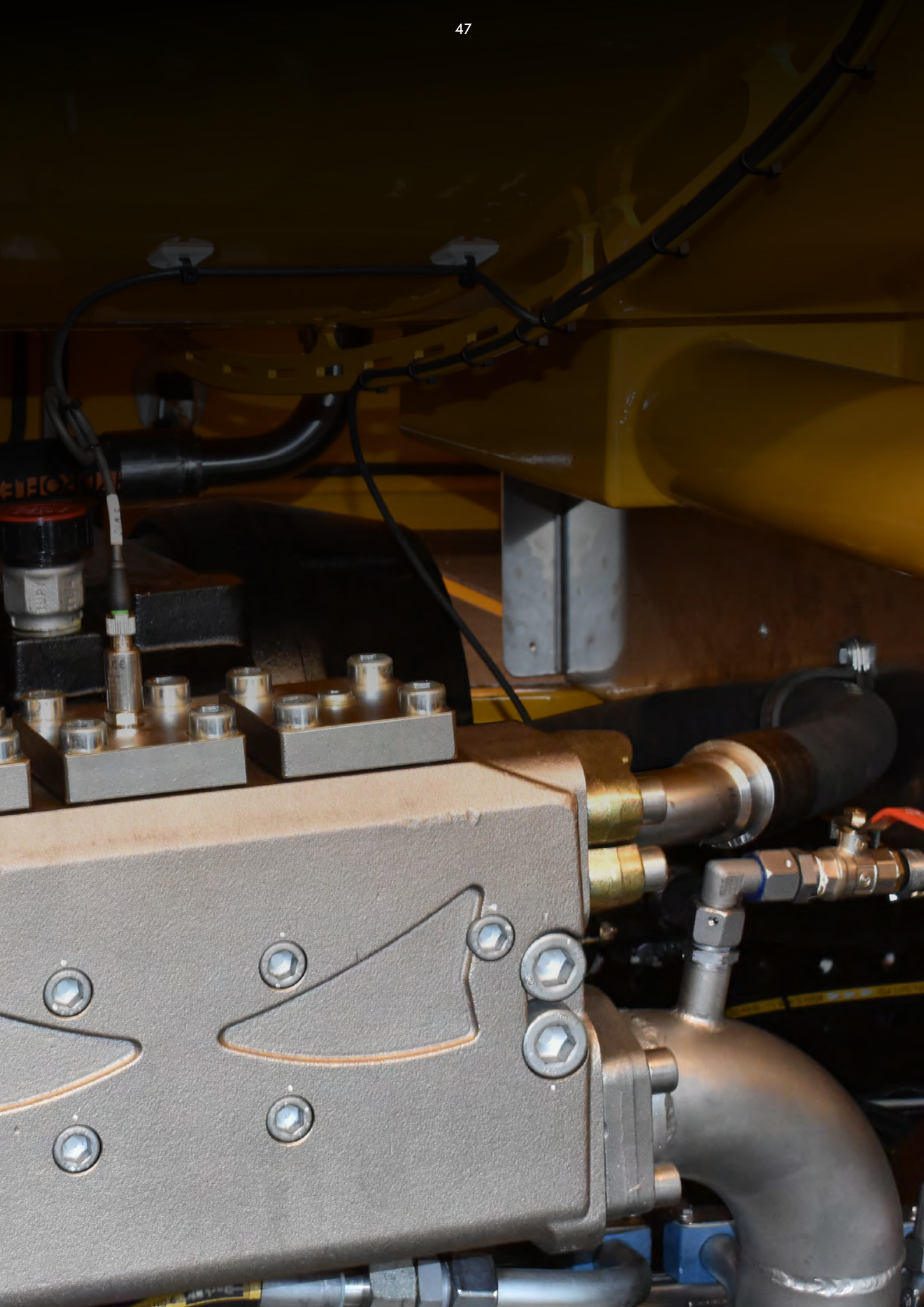


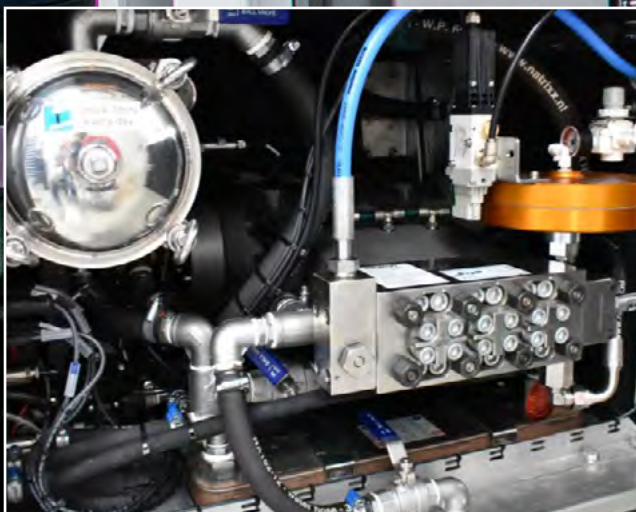
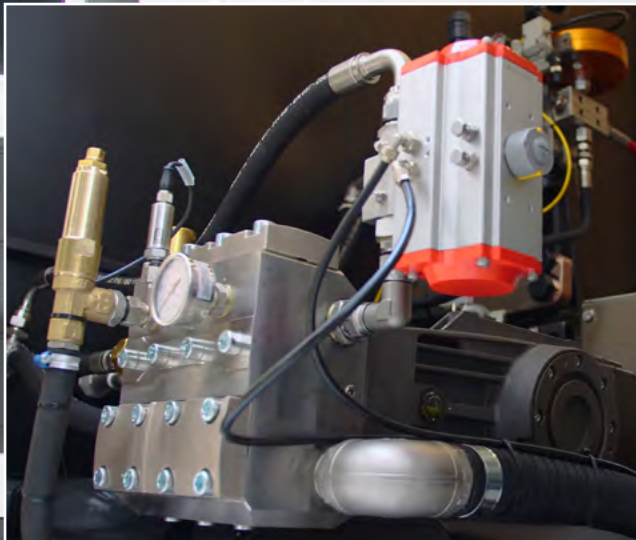
NMV PTO PUMP KITS

420 LPM @ 170 BAR

480 LPM @ 140 BAR







SPECIAL PURPOSE (CUSTOM) VEHICLE

PRO-JETTING special purpose vehicle integrations have everything exactly at the right place.

Software controlled (PTO) high pressure unit, water supply, power supply, reels, equipment storage, workbench, control studio and cabinetry with sufficient storage.

All according to your specific job requirements.



HIGH PRESSURE TRAILER STAGE V DIESEL - 229HP





WEIJER
HYDRA-POWER

4

ACCESSORIES

up to 2800 bar (40,600 psi)

(ROTATING) NOZZLES & LANCES



- Pipe & Tube Cleaning
- Diameter: 12 – 800 mm (0.5-32")
- Pressure: <2800 bar (40.000 psi)
- Rotating nozzles, unpluggers,

GUNS



- Guns and lances
- Dump guns
- Surface cleaners
- Electric remote guns

HOSES



- (150 °C) High pressure hoses
- UHP Highest pressure
- High tensile steel wire reinforced thermoplastic
- Sewer jetting hoses
- Varying diameters custom lengths & couplings

COUPLINGS & ADAPTERS



- Couplings
- Adapters
- T- & Y-Pieces
- Swivels

ACCESSORIES

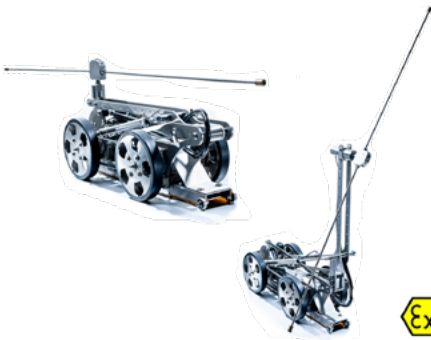
up to 2800 bar (40,600 psi)

R600 TRACKED INDUSTRIAL ROBOT



- Surface preparation
- Tank cleaning
- Vacuum excavation
- Customization

TWK300



- Large diameter pipe cleaning
- Diameter: 1000 -3000mm (40-120")
- Min. acces diameter 400 mm (15.7")
- Optional: ATEX Zone 0

PROTECTIVE EQUIPMENT & CLOTHES



- Hose covers
- Jackets, Trousers, Overalls, Aprons
- Gaiters, Gloves

YOUR CUSTOM SOLUTION



- Robotics
- Special purpose vehicles
- Your custom solution

NOTES





PROFESSIONAL JETTING EQUIPMENT & SOLUTIONS

PRO-JETTING offers a complete range of units, parts, robots and accessories for jetting and industrial cleaning up to 2800 bar (40,600psi) backed by personal service, SIR certified mechanics, and an in-house engineering department.

- Personal service with large stock and fast shipping
- State-of-the-art workshop
- In-house engineering for custom solutions
- 4200 bar (61,000 psi) test facility and SIR certification

SIR®

ID-TEC, the company behind PRO-JETTING, SEWER ROBOTICS and DIVEWISE-EQUIPMENT is specialized in high pressure and robotic applications for cleaning, inspection and maintenance of confined spaces.

DIVEWISE
EQUIPMENT

ID-TEC INNOVATION
DEVELOPMENT
TECHNOLOGY

SEWER
ROBOTICS

401 MASTER BLASTER 40K



WWW.PRO-JETTING.COM



INFO@PRO-JETTING.COM



+31 (0) 174 – 289 475



ABC-WESTLAND 197 2685 DB,
POELDIJK, THE NETHERLANDS

YOUR PRO-JETTING DISTRIBUTOR: