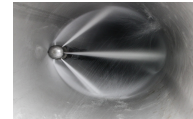


## Whale High Pressure Built-In Machine

160 - 170 bar | 43 - 55 LPM | 14,7 - 17,7 kW

The Whale Sewer cleaning units are available with a pressure of 160 to 170 bar, a water output of 43 to 55 LPM and a capacity of 14.7 to 17.7 kW. These sewer cleaning machines or units are relatively low in pressure, but because of their high water yield and compact construction, they are very suitable for working in locations that are difficult to access.



## Specifications

**Pressure:** 160 - 170 bar (2320 - 2470 psi)

**Flow:** 43 - 55 LPM (11,4 - 14,5 gpm)

**Power:** 14,7 - 17,7 kW

**Capacity:** 300/500 liter

**Drive:** Gasoline

**Version:** Basic version || 2nd H.P. Reel version || Power Reel version

**Applications:** Pipe rinsing, pipe washing, removal of glue and paint, descaling of steel plates and blocks, tank cleaning, cleaning of wells, streets and roads and other industrial applications that are difficult to access.

## Features

- Cold water
- Customization possible
- SIR certified
- Comet TW Premium High Pressure pump
- Remote control for the system (except basic version)
- Pulse system (optional)
- Electric reel (optional)

## Overview Available Whale Built-In Machines

Model	Flow	Pressure	Type	Power
Whale 43/170	43 LPM (11.4 gpm)	170 bar (2470 psi)	Honda GX630	14,7 kW
Whale 55/160	55 LPM (14,5 gpm)	160 bar (2320 psi)	Honda GX690	17,7 kW